



WPSC0X63-XXXX-XX

Base Diameter = 6.63", 8.63" and 9.63"
Height = 10-40 feet,
built to suit



SPECIFICATIONS

Structural

- Analysis per TIA-222, AASHTO & local building codes
- Maximum wind speed rated to 171 mph
- Innovative foundation designs available*

Thermal

- Passive & active cooling (as required) in accordance with GR-487

Electrical

- Accommodates utility meter, AC & DC power distribution, power disconnect and fiber distribution
- Optional power management solutions*
- Pre-integration of the pole system available*

Materials

- Carbon steel welded frame

Finish

- Hot-dip galvanized steel with high-grade polyester powder topcoat
- Custom colors or concrete-look available

Pole Shaft Offerings

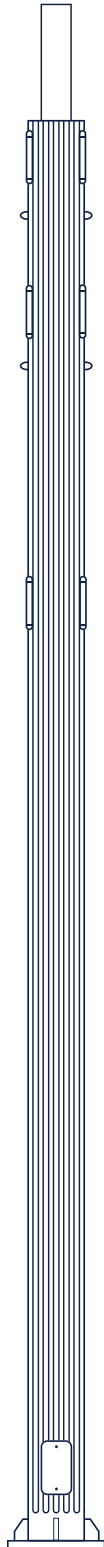
- Round (6.63", 8.63" or 9.63" diameter)
- Smooth finish

*Contact WirelessPSC for integrated solutions



WPSC0X63-XXXX-XXF

Base Diameter = 6.63", 8.63" and 9.63"
Height = 10-40 feet,
built to suit



SPECIFICATIONS

Structural

- Analysis per TIA-222, AASHTO & local building codes
- Maximum wind speed rated to 171 mph
- Innovative foundation designs available*

Thermal

- Passive & active cooling (as required) in accordance with GR-487

Electrical

- Accommodates utility meter, AC & DC power distribution, power disconnect and fiber distribution
- Optional power management solutions*
- Pre-integration of the pole system available*

Materials

- Carbon steel welded frame

Finish

- Hot-dip galvanized steel with high-grade polyester powder topcoat
- Custom colors or concrete-look available

Pole Shaft Offerings

- Round (6.63", 8.63" or 9.63" diameter)
- Custom fluted (to match existing light standard)

*Contact WirelessPSC for integrated solutions